



**MOTION**  
COMPOSITES

 **HELIO A6**



## GO BEYOND!

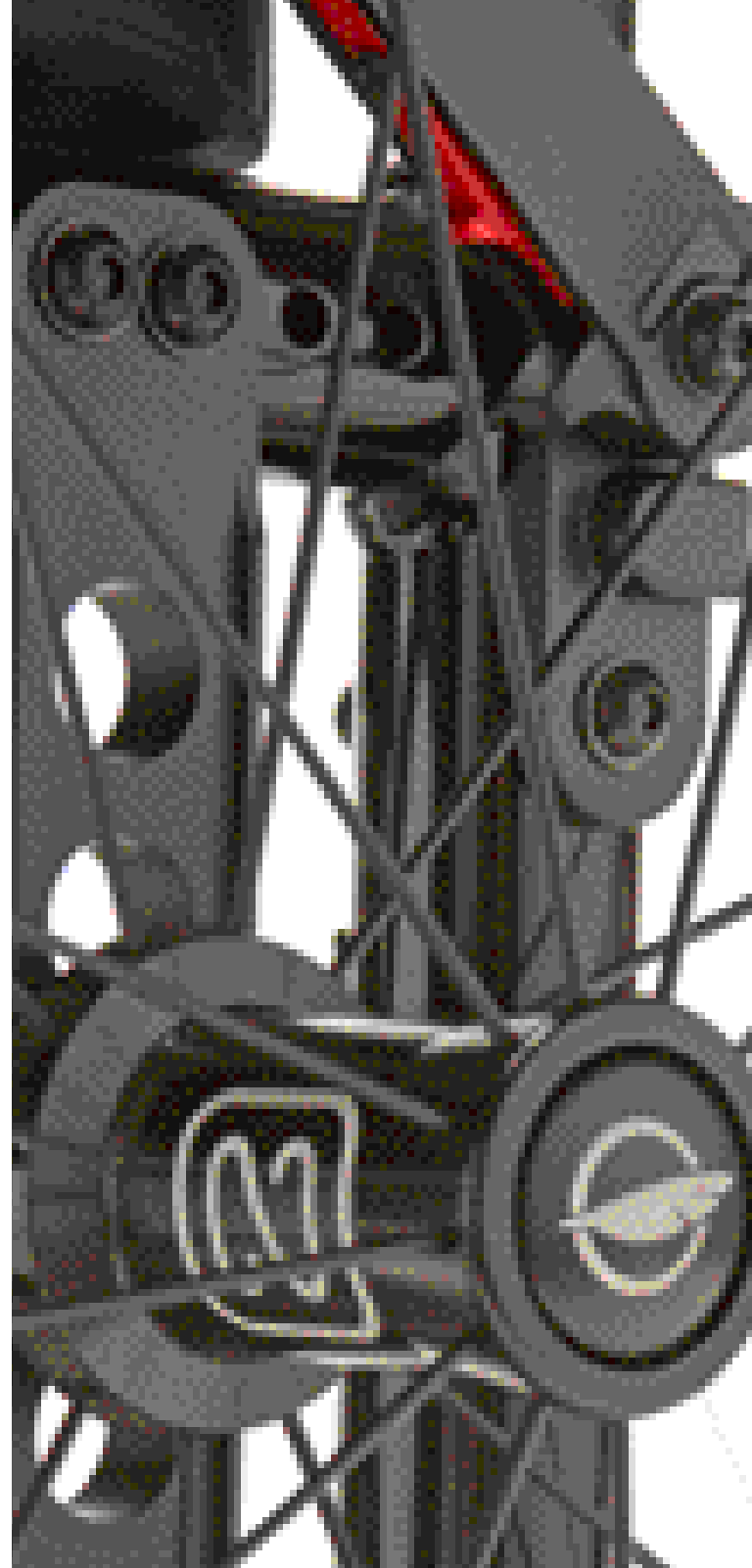
**Motion Composites believes in empowering wheelchair users. Why? Because clunky and inefficient equipment is unfortunately too common. Which means you're less mobile and less efficient than you could be — and should be.**

So we did something about it. We use the world's most advanced technologies to enhance people's mobility and improve their lives.

We began with a simple premise: light, adjustable and reliable devices produce better mobility. The success of our Helio and Veloce wheelchairs proved our point and paved the way for the newest member of the family - the Helio A6. With the same attention to detail and design, the Helio A6 is one of the most efficient wheelchairs available at a cost effective entry price.

Don't sacrifice quality and performance for afford-ability. The Helio A6 is made with high quality materials and components for durability and performance.

It's your Helio A6.







 **HELIO** A6



## **The Most Efficient Mobility , at the most Effective Cost!**

When it comes to lightweight performance, Motion Composites is unrivaled. With the New A6, our engineer's have paired cutting edge design with our signature symmetrical cross brace to deliver a wheelchair that out performs its competition. With full adjustability and a transport weight of 13.1 lbs (5.94 kg), the A6 races to the top of its class.



## Simple. Light. Tough.

We have designed the A6 for efficiency and simplicity. Innovative engineering and lightweight accessories have enabled us to create a fully adjustable wheelchair that won't weigh you down. Our vertical axle plate offers multiple center of gravity options and maximizes lateral stability, while our one-piece side frames enhance the strength and maneuverability.

## The lowest seat-to-floor height.

The Helio A6's innovative frame design lets you achieve a super low 13 ½" (34.3 cm) front seat-to-floor height with a 4" caster on a standard frame. Great for effective foot propulsion.

## Premium accessories.

Expect more from the Helio A6. High quality, durable accessories include our new Height Adjustable T-arms, integrated push handles and Newton One spoke wheels. They make the Helio A6 a smart choice in the wheelchair category.

## Durable and adjustable armrest.

Designed for durability, our single post armrest provides height adjustment without the sloppiness of traditional single post arms. The height adjustment is precise and the integrated armrest receiver eliminates the noise and rotation that can happen over time.







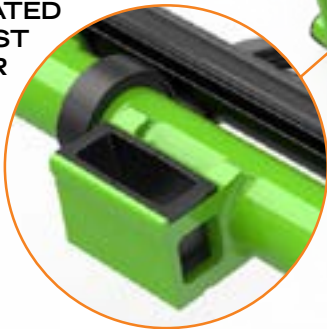
**REINFORCED  
BACK CANE  
SUPPORT**  
for added  
stability and  
comfort



**INTEGRATED  
SEAT SLIDER**  
for better seat  
sling support

**RIGID  
UNIBODY  
FRAME**  
eliminates  
joints, reduces  
movement  
and maximizes  
efficiency

**INTEGRATED  
ARM REST  
RECEIVER**  
Built for  
durability



**SYMMETRICAL  
CROSS  
BRACE**  
minimizes  
torsion in the  
frame and  
contributes to  
best-in-class  
propulsion  
efficiency.



**HYBRID FRAME  
DESIGN**

Eliminates  
the need for  
both hemi  
and standard  
frame, while  
providing  
a complete  
range of seat-  
to-floor heights.



**ANTI-FLUTTER  
CASTER**  
provides a  
smooth, more  
efficient ride





**Rigid Unibody Frame** - A unibody frame is much stronger and needs less maintenance than a standard two-part frame. It also reduces weight while maximizing propulsion efficiency.



**Symmetrical Hydroformed Crossbrace 3D** - Entirely symmetrical aluminum crossbrace for reduced torsion and better energy distribution throughout the frame.



**Ultrarigid Folding System** - High-precision tolerances and oversized pivot axles for best-in-class propulsion efficiency.



**Anti-flutter system** - Minimize flutter with a simple twist of a screw.



**Newton Accessories** - Parts and accessories designed to be lighter, with improved functionality and awesome style.

## Technical Specifications

### Structure

Frame	Folding with aluminum crossbrace
Material	Aluminum alloy
Transport Weight	13.1 lbs. (5.94 kg) (16*16, w/o rear wheels & footrest)
Weight capacity	265 lbs. (120 kg) HD Kit: 350 lbs. (159 kg)

### Dimensions

Width	14" (35.6 cm) to 22" (55.9 cm)	
Depth	16" (40.6 cm), 18" (45.7 cm), 20" (50.8 cm)	
Front seat-to-floor height	(w/4" caster)	(w/8" caster)
	12 ½" (31.75 cm) to 20½" (52 cm)	
Rear seat-to-floor height	(w/20" wheel)	(w/26" wheel)
	12" (30.5 cm) to 21¼" (54 cm)	

## Motion Composites

Quebec, Canada

T (866) 650-6555 F (888) 966-6555

info@motioncomposites.com

www.motioncomposites.com



**Seat depth**  
14" to 20"  
35.6 cm to 50.8 cm



**Seat width**  
14" to 22"  
35.6 to 55.9 cm



**Front seat to floor**  
13" to 21¼"  
33.0 cm to 54.0 cm



**Rear seat to floor**  
12 ½" to 20"  
31.8 cm to 50.8 cm



**Back height**  
9" to 21"  
22.9 cm to 53.3 cm



**Footrest angle**  
60°, 70°, 80°, 90°



**Back angle**  
70° to 110°



**Wheel camber**  
0°, 3°, 6°



**Center of gravity**  
3 ¼" range  
8.3 cm range



**Weight limit**  
265 lbs. (120 kg)  
(HD Kit: 350 lbs.  
159 kg)



**Overall width**  
from +7 ½"  
from +19.1 cm



**Armrest height**  
8" to 14"  
20.3 cm to 35.6 cm



Sunkissed Orange



Burgundy



Monster Green



Steel Blue



Sapphire Blue



Charcoal



Ferrari Red



Fushia



Acid Green



**MOTION  
COMPOSITES**

A6 brochures pages